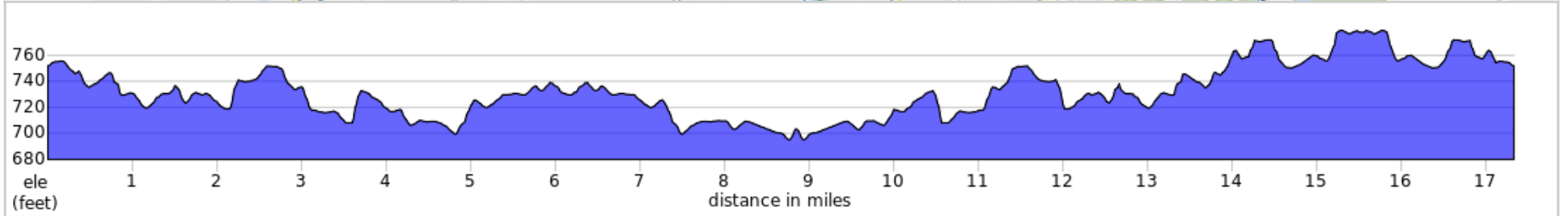
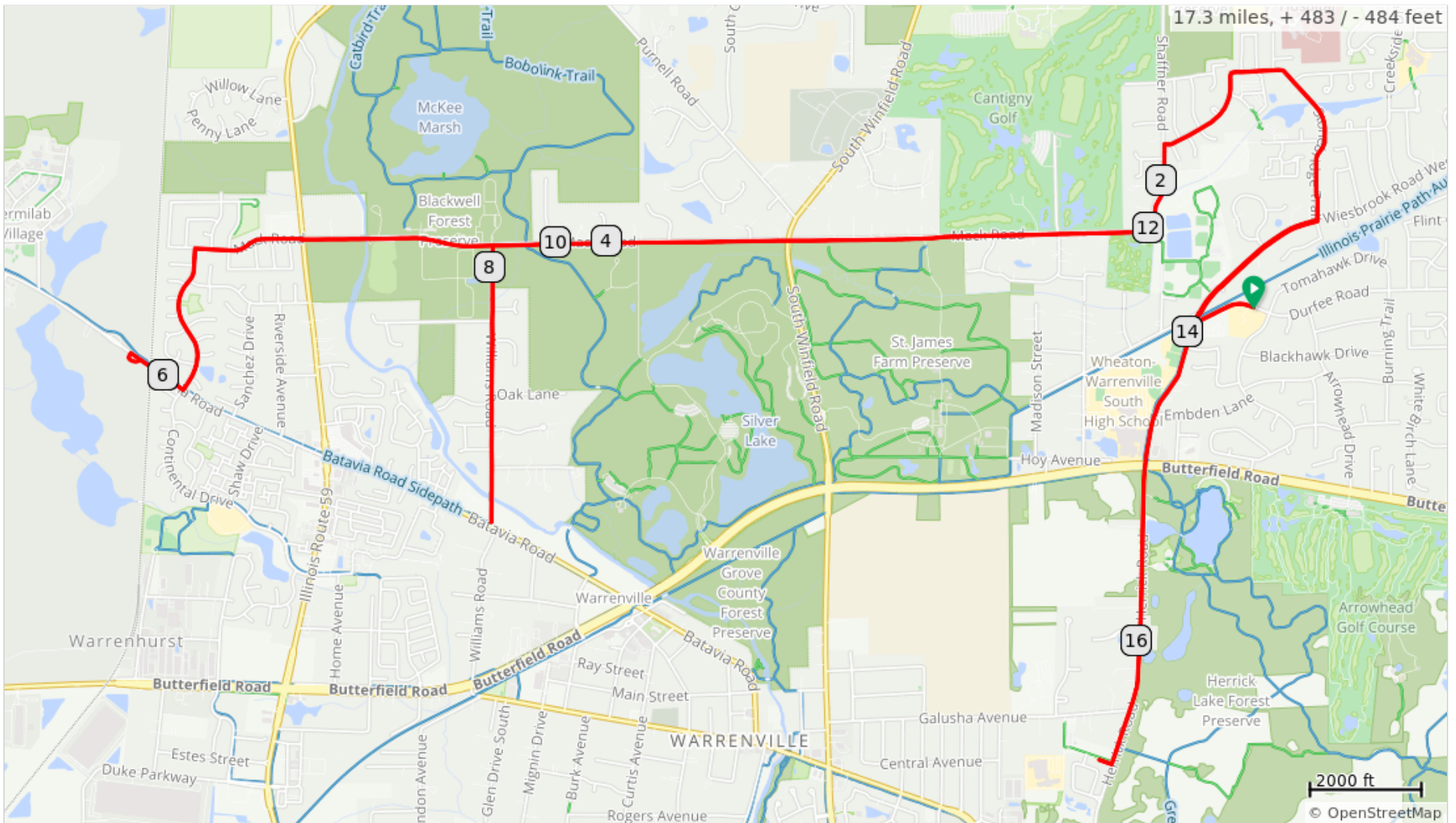


ET Wednesday Night Ride



17.3 miles, + 483 / - 484 feet



ET Wednesday Night Ride

Num	Dist	Type	Note	Next
1.	0.0	📍	Start of route	0.0
2.	0.0	←	Start at Weisbrook Elementary, L onto Durfee	0.2
3.	0.2	→	Sharp R onto Wiesbrook Rd S	0.6
4.	0.8	←	L onto Stonebridge Trail	0.7
5.	1.5	↑	Continue onto S County Farm Rd	0.4
6.	1.9	←	L onto Shaffner Rd	0.3
7.	2.2	↑	Continue onto Mack Rd	3.2
8.	5.4	←	L onto Continental Dr	0.5
9.	5.9	→	R onto Batavia Rd	0.2
10.	6.1	↻	U-Turn at Circle just before Fermilab entrance	0.2
11.	6.4	←	L onto Continental Dr	0.5

6.4 miles. +162/-176 feet

Num	Dist	Type	Note	Next
12.	6.9	→	R onto Mack Rd	1.0
13.	7.9	→	R onto Williams Rd	0.9
14.	8.8	↻	U-Turn at Batavia Road, head back north on Williams	0.9
15.	9.8	→	R onto Mack Rd	2.2
16.	12.0	←	Slight L onto Shaffner Rd	0.3
17.	12.3	→	R onto S County Farm Rd	0.4
18.	12.7	↑	Continue onto Stonebridge Trail	0.7
19.	13.4	→	R onto W Wiesbrook Rd	1.1
20.	14.5	↑	Cross Butterfield Rd onto Herrick Rd	1.0
21.	15.5	→	R onto Huskie Hwy Ave	0.1
22.	15.6	↻	U-Turn back onto Herrick Rd	1.0

9.2 miles. +249/-201 feet

Num	Dist	Type	Note	Next
23.	16.6	↑	Cross Butterfield Rd onto Wiesbrook Rd S	0.5
24.	17.1	→	Slight R onto Durfee Rd, end at Weisbrook Elementary	0.2
25.	17.3	📍	End of route	0.0

1.8 miles. +5/-24 feet